

FOR IMMEDIATE RELEASE:

CONTACT: Sienna Freeman
Director
Wexler Gallery
(215) 923-7030
Sienna@wexlergallery.com

Marilyn Kirsch

Beneath the Surface



Marilyn Kirsch, *The Book of Earth and Fire* ("The Four Elements" Series), 2010, Oil on canvas, 72 x 112" Diptych

WEXLER GALLERY
October 7 – November 26, 2011

PHILADELPHIA- Wexler Gallery presents recent paintings and photographs by New York based artist **Marilyn Kirsch** on our second floor. Show runs October 7th through November 26th, 2011. In correlation with [DesignPhiladelphia 2011](#), an **Opening Reception** with the Artist will take place on Saturday, October 22nd from 5 – 8pm.

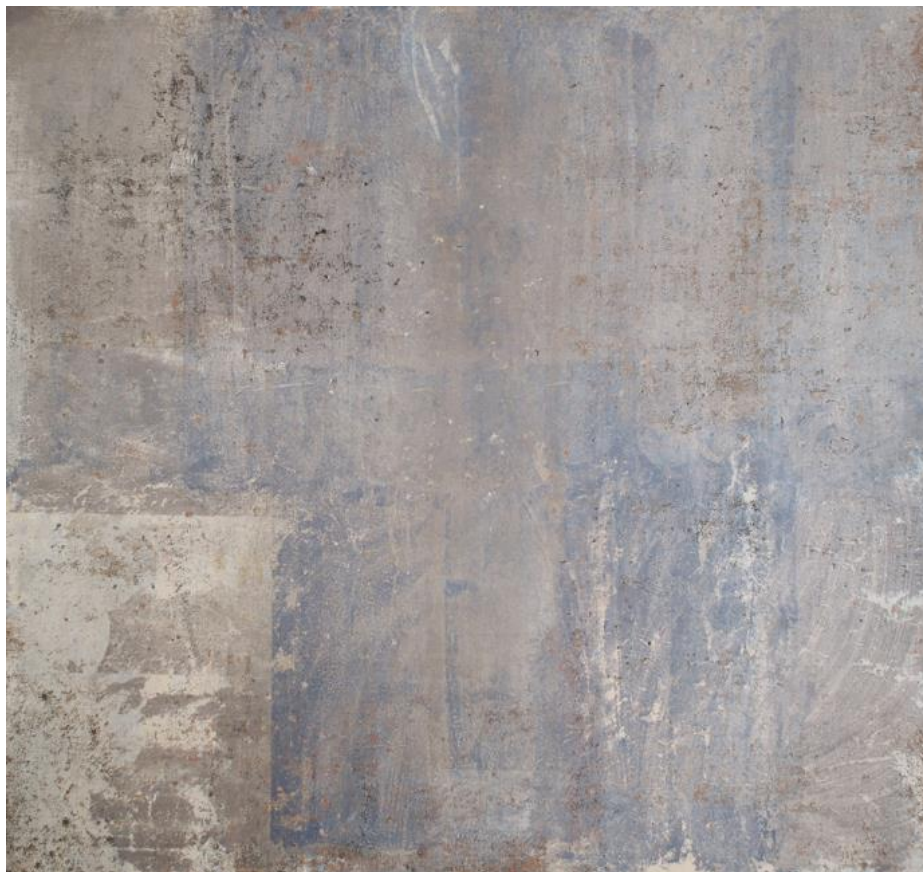
An oil painter who sees her work as “somewhere between abstract and non-objective,” **Marilyn Kirsch** aims to create elusive images that lack boundaries. According to the artist:

“This deliberate ambiguity is a way of exploring how meaning can be found where it was not intended. Random marks of paint may seem to become images of real things, like finding pictures in the clouds.”

Maintaining an expert control over her medium while embracing the element of chance, Kirsch sees her work as a “response to the unsettling relationship between random acts and carefully planned decisions.” The end result often reflects a balance between the physical properties of the materials used and the metaphorical content of the image.

Kirsch has a BFA from the Massachusetts College of Art (1973) and an MFA from The School of the Museum of Fine Arts in Boston (1976). Her work has shown throughout the United States and can be found in numerous private and corporate collections including AT&T (NY), Chemical Bank (NY), Gecko Advertising Group (PA), Wachovia Bank (NC), and more. Kirsch presently lives and works in New York City.

The Wexler Gallery is located at 201 North Third Street in the historical district of Old City Philadelphia. We invite you to visit our gallery or explore our website at www.wexlergallery.com. For high resolution images or additional information, please contact Sienna@wexlergallery.com or call (215) 923-7030.



Marilyn Kirsch

City Reclaimed by Birds (from the series "The Worm City"), 2009

Oil on canvas

60 inches x 64 inches



Marilyn Kirsch

The Painted Meadow (from the series "Field Notes"), 2010

Oil on canvas

60 inches x 94 inches (in two sections) 2010



Marilyn Kirsch

The Ochre Sea (from the series "Field Notes"), 2011

Oil on canvas

60 inches x 56 inches



Marilyn Kirsch

Standing In Kip's Bay, 1/10, 2011

Inkjet print gallery mounted in Plexiglass

20 X 30 inches



Marilyn Kirsch

Taxi Yellow, 1/10, 2011

Inkjet print gallery mounted in Plexiglass
20 X 30 inches



Marilyn Kirsch
The Mask, 1/10, 2011
Inkjet print gallery mounted in Plexiglass
20 X 30 inches